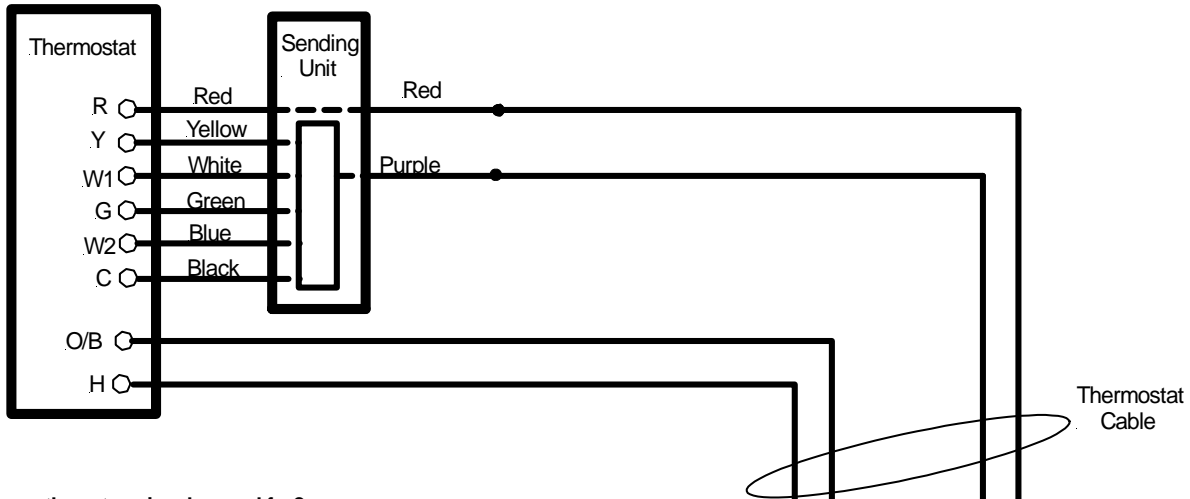


FAST-STAT Installation Guide B

(read Installation Guide A first for basic instructions)

Using a Model 5000 with a thermostat cable that has more than 2 conductors.



What can the extra wires be used for?

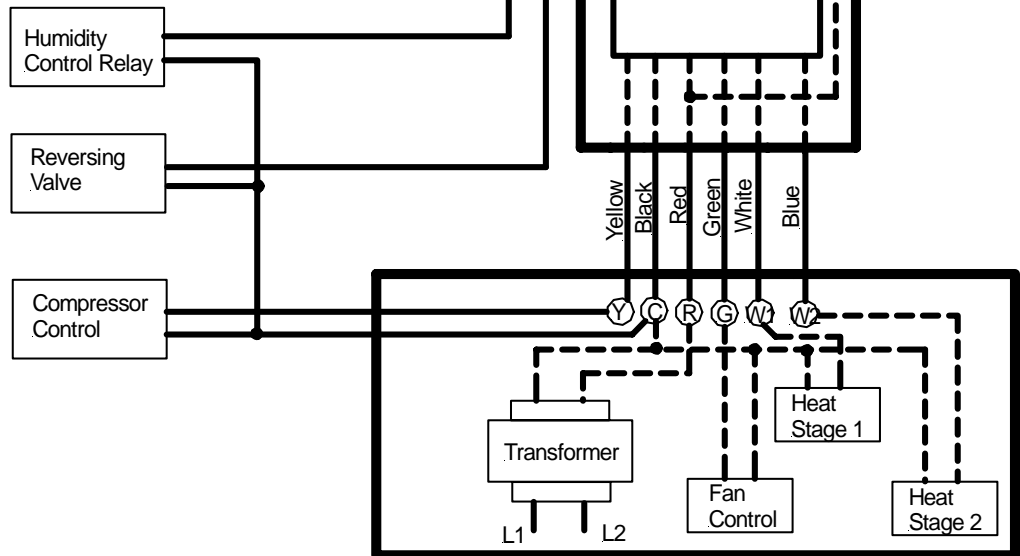
You can use the extra thermostat cable wires for Y2, O/B, H, D, E or other functions. In this example the extra wires have been used for "Humidity" and "reversing valve" functions.

How the circuit works

The circuit works by taking the transformer power at "R" and sending it through the Receiver and Sending Unit to the thermostat. This is the same as if a single wire was connected between the transformer "R" and the thermostat "R". At the thermostat the "fan"(G),"cooling"(Y1) and "heat" (W1) (W2) & "common" (C) functions are sent back to the Receiver through the 2nd thermostat cable conductor. The 3rd, 4th and others wires (if available) can be used as required.

How to connect

The extra thermostat wires are used in the normal manner in that the wires are connected to the thermostat at one end and the respective loads at the other end.



Furnace Wiring